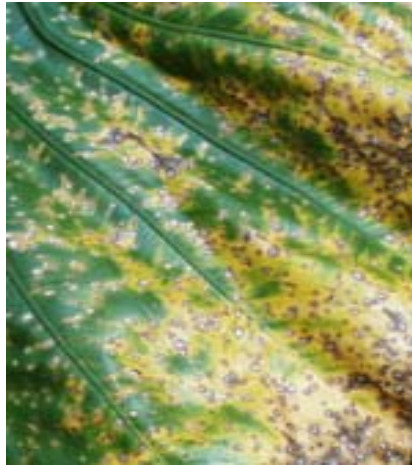


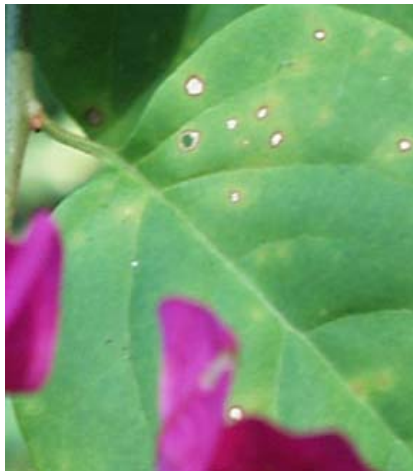
1. *Cercospora* sp. conidium emerging from stomate of hydrangea leaf



2. *Mycosphaerella* leaf spots and chlorosis on *Alocasia macrorrhiza*



3. *Colletotrichum* leaf spot on breadfruit (*Artocarpus altilis*)



4. *Cercosporidium* leaf spot on bougainvillea



5. Conidiophores and spores of *Cercosporidium bougainvilleae*



6. *Colletotrichum* acervuli and setae on pepper (*Capsicum annuum*)



7. Papaya leaf spot caused by *Corynespora cassiicola*



8. Conidiophores and spores of *Corynespora cassiicola*



9. Branch dieback of *Carissa* by *Lasiodiplodia theobromae*



10. Dasheen Mosaic Virus on taro (*Colocasia esculenta*)



11. White leaf spot on taro caused by *Leptosphaerulina trifolii*



12. Asci and ascospores of *Leptosphaerulina trifolii*



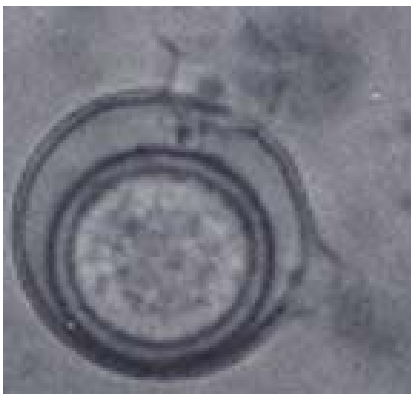
13. Taro leaf blight caused by *Phytophthora colocasiae*.



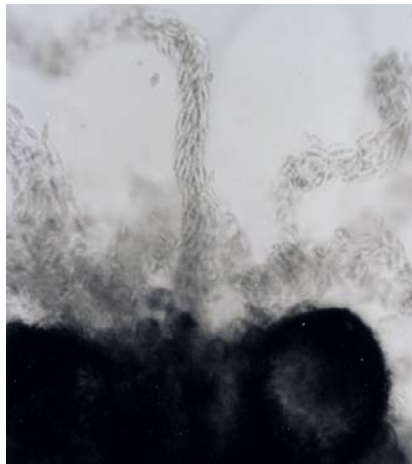
14. White spores around taro leaf blight lesions (*Colocasia taro*)



15. Bacterial wilt (*Ralstonia*) exudate from the xylem of sweet pepper



16. *Pythium aphanidermatum*: oogonium, antheridium, oospore



17. Spores of *Sphaerellopsis filum*, a parasite of rust fungi



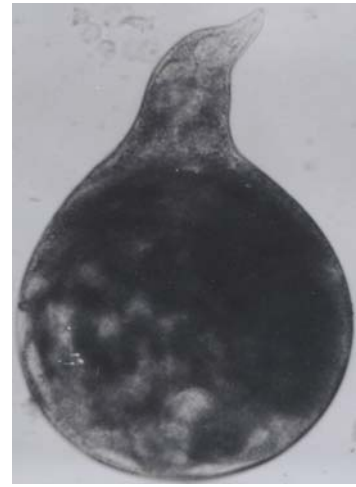
18. Crusty mycelium of *P. noxius* on rotted roots of *Hibiscus tiliaceus*



19. *Phellinus noxius* on multi-stemmed forest tree (*Intsia*)



20. Galls on roots of tomato caused by *Meloidogyne* sp



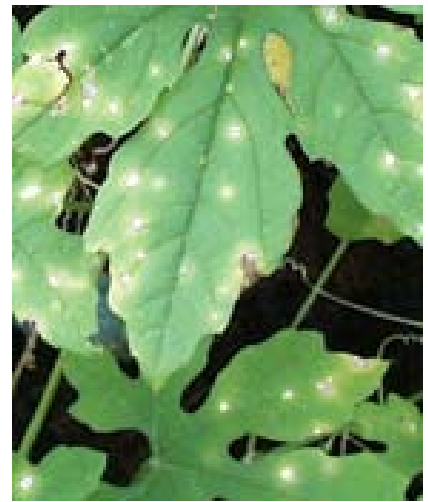
21. Female root knot nematode, *Meloidogyne incognita*



22. Mango flower blight caused by *Colletotrichum gloeosporioides*



23. Lesion on taro leaf in greenhouse caused by *Cladosporium* sp.



24. *Cercospora* leaf spot of bitter melon (*Momordica charantia*)



25. Stunted sucker growth caused by Banana Bunchy Top Virus



26. *Cordana* leaf spot of banana caused by *Cordana musae*



27. Black leaf streak caused by *Mycosphaerella fijiensis*



28. Small, reddish streaks of early *M. fijiensis* infection



29. Black cross leaf spot of banana caused by *Phyllachora musicola*



30. Stem discoloration and dieback of kava caused by CMV



31. *Coleosporium* rust on upper surface of plumeria leaf



32. *Pseudocercospora* leaf spot on panax (*Polyscias scutellaria*)



33. *Colletotrichum* anthracnose on Philippine orchid (*Spathoglottis*)



34. *Metarhizium* fungus on cicada before formation of green spores



35. Green spores of *Metarhizium anisopliae* on rhino beetle larva



36. Conidiophore of *Verticillium lecanii* on aphid